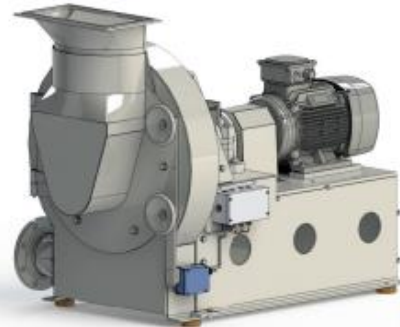


HAMMER MILL – HIGH SPEED MILL SERIES HM

THE EASY USE HAMMER MILL FOR LOW THROUGHPUT WITH PNEUMATIC CONVEYOR.

The Hammer Mill HM is the perfect self-feeding universal mill for grinding feed components.

The HM Series comprises three sizes for a drive-power range between 11 and 55 kW.



TECHNICAL DETAILS

- Strong welded-steel construction with symmetric design, depending on left or right set-up.
- Allows rotation in one direction of your choice (can not be changed)
- Strong wear-resistant parts protect the grinding chamber and easy to maintain
- Catch-trap for foreign bodies inside the grinding chamber to protect the screens – easy to clean
- Long-lasting specially developed turbo engine, dynamically balanced, equipped with armoured beaters
- Wide opening doors allow easy access to the grinding chamber and for changing the sieves and beaters
- 1-part sieve without frame, easily and quickly changeable
- Tested and certified in a shock-resistant, and flame escape proof design up to 0.4 bar

Tietjen high speed mills prove their worth operating 24 hours a day, 7 days a week – often in the harshest of environments. The reliability of our machines is legendary.

Mill Type	HM 1	HM 2	HM 3									
Grinding chamber diameter	700 mm	700 mm	700 mm									
Screen width	150 mm	200 mm	250 mm									
Grinding chamber area	0.3 m ²	0.4 m ²	0.5 m ²									
Pneumatic conveyor (until approx.)	12 m	12 m	12 m									
Dimensions and Weights												
Length* (approx.)	1550 mm	1750 approx. mm	1900 mm									
Width (approx.)	900 mm	900 mm	900 mm									
Height (approx.)	1196 mm	1196 mm	1196 mm									
Weight without motor	500 kg	550 kg	610 kg									
* depending on motor size												
Drive 3000 1/min, 50 Hz (speed between 3600 1/min, 60Hz)												
Power range	11kW	15 kW	18,5 kW	22 kW	15 kW	18,5 kW	22 kW	30 kW	22 kW	30 kW	37 kW	45 kW

Smooth running large-chamber grinder at an under load noise level below 90 dB (A)

Common application ■

ATEX category:
II 3 D

Pressure shock
resistance:
0.4 bar

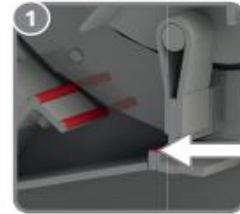
STANDARD SUPPLY AND OPTIONS

STANDARD SCOPE OF SUPPLY:

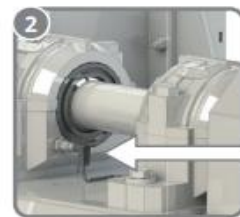
- Multi-layer coating: colour RAL 7032 (pebble grey) or RAL 9001 (cream)
- Pressure shock-resistant 0.4 bar and flame escape proof design
- Automatic door-locking system with stand still monitor
- Elastic pin coupling (N-Eupex) with protection hood
- Vibration dampers, height adjustable
- Sealing frame between the mill outlet and under hopper intake
- Electrical components pre-wired into terminal boxes
- Drive motor B3, with integrated PTC sensors
- 1 set of beaters fitted on beater frames
- 2 sets of screens, one set pre-fitted in the mill
- 1 set of special tools

OPTIONS:

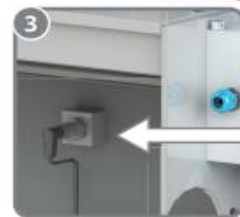
- Security package:
 - Bearing-temperature monitoring
 - Milling-chamber temperature monitor
 - Vacuum monitor for grinding chamber
- Electrical components suitable for installation in ATEX Zone 22 II 3D



Stone trap



Bearing Temperature Monitoring



Milling chamber temperature monitor

